

PT/ 2PT Bombas centrífugas monobloco | Close-coupled centrifugal pumps

PRESSURIZAÇÃO | PRESSURIZATION

➤ APLICAÇÕES

Sistemas de lavagem
Sistemas de rega
Serviços industriais e domésticos

➤ MATERIAIS DE CONSTRUÇÃO

Corpo da bomba: AISI 304
Impulsor: AISI 304
Veio: AISI 304
Empanque: Mecânico em Car/ SiC/ EPDM
O'rings: EPDM
Notas: Versão PTi em AISI 316 sob consulta

➤ LIMITES DE UTILIZAÇÃO

Temperatura máxima do líquido: até 110°C
Pressão máxima de serviço: 8 bar
Temperatura ambiente máxima: 40°C

➤ CARATERÍSTICAS DO MOTOR

Tensão: 1x230V ou 3x400V
Classe de isolamento: F
Classe de proteção: IP55
Rotação: 2900 rpm

➤ APPLICATIONS

Washing systems
Pressurized irrigation systems
Industrial and domestic applications

➤ CONSTRUCTION MATERIALS

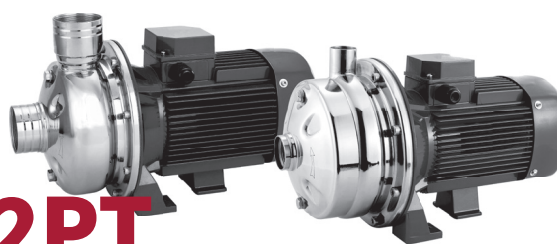
Pump casing: AISI 304
Impeller: AISI 304
Shaft: AISI 304
Seal type: Mechanical in Car/ SiC/ EPDM
O'rings: EPDM
Note: PTi version in AISI 316 under request

➤ WORKING LIMITS

Maximum liquid temperature: up to 110°C
Maximum operating pressure: 8 bar
Maximum ambient temperature: +40°C

➤ MOTOR SPECIFICATIONS

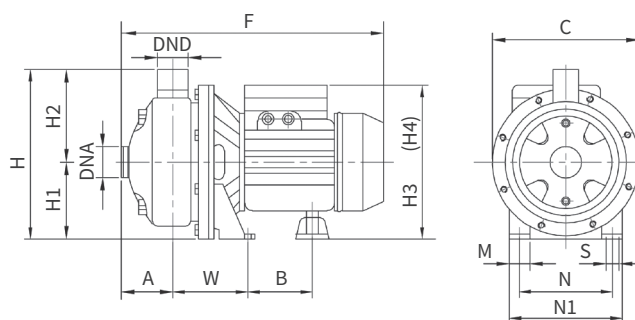
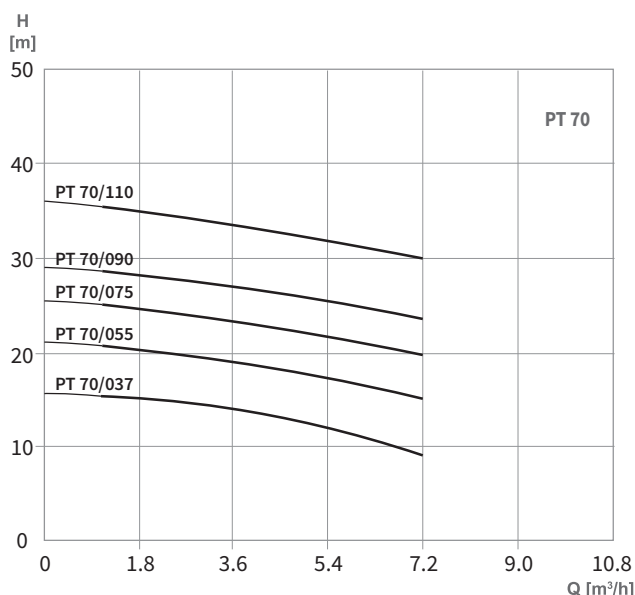
Voltage: 1x230V or 3x400V
Insulation class: F
Protection class: IP55
Rotation: 2900 rpm



PT/ 2PT

A série **PT** é constituída por bombas centrífugas monobloco de um impulsor integralmente em AISI 304 adequado para água limpa. A série **2PT** é constituída por dois impulsores, caracterizam-se pela sua simplicidade, robustez, reduzido nível de ruído e elevada eficiência energética.

The **PT** series are composed by close coupled centrifugal pumps with a impeller complete in AISI 304 suitable for clean water. The **2PT** series are composed by of two impeller, it is notable for its simplicity, robustness, low noise working and high energy efficiency.

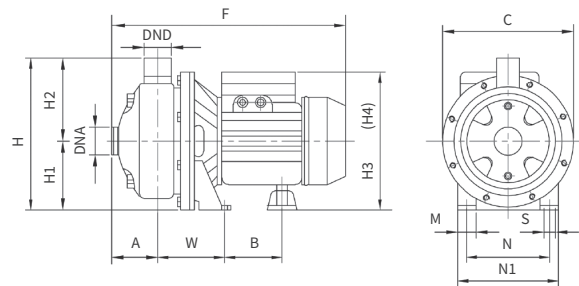
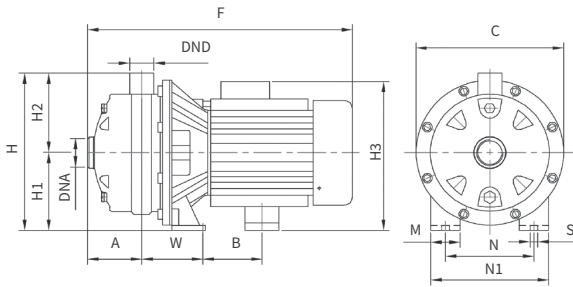
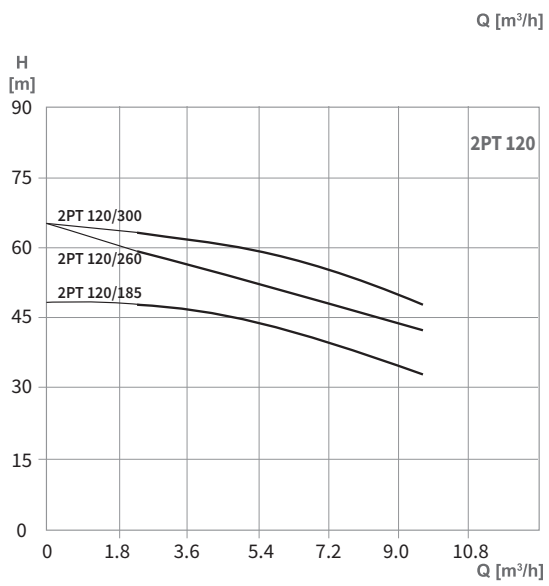
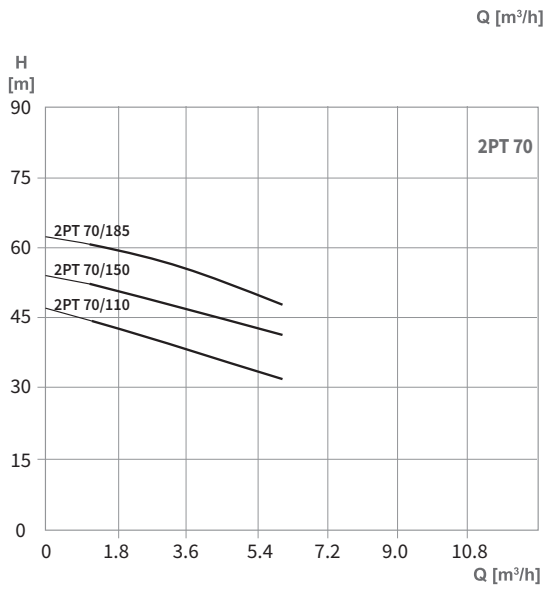
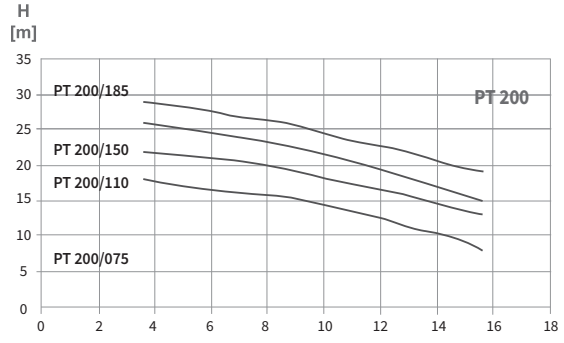
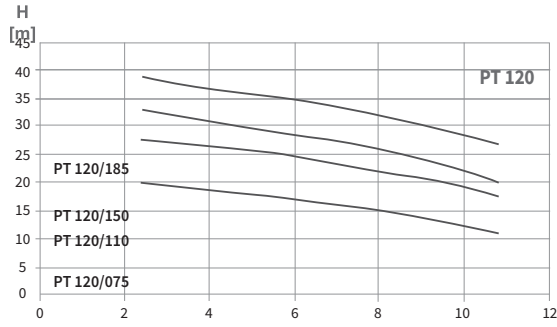


MODELO MODEL		POTÊNCIA POWER (kW)	DIMENSÕES DIMENSIONS (mm)																PESO WEIGHT (Kg)
1~	3~		A	C	F	H	H1	H2	H3*	H4*	M	N	N1	S	W	B	DNA	DND	
PT 70/037M	PT 70/037	0,37	53	213	327	232	108	124	211	210	39	120	160	9	93	76	G1 ¼"	G1"	8,2
PT 70/055M	PT 70/055	0,55	53	213	327	232	108	124	211	210	39	120	160	9	93	76	G1 ¼"	G1"	9,2
PT 70/075M	PT 70/075	0,75	53	213	327	232	108	124	211	210	39	120	160	9	93	76	G1 ¼"	G1"	10,6
PT 70/090M	PT 70/090	0,90	53	213	327	232	108	124	211	210	39	120	160	9	93	76	G1 ¼"	G1"	11,0
PT 70/110M	PT 70/110	1,1	53	235	383	252	120	132	260	234	39	140	180	9	96	90	G1 ¼"	G1"	13,8

*H3 para motores monofásicos | *H3 for single-phase motors

*H4 para motores trifásicos | *H4 for three-phase motors

PRESSURIZAÇÃO | PRESSURIZATION



MODELO MODEL		POTÊNCIA POWER (kW)	DIMENSÕES DIMENSIONS (mm)														PESO WEIGHT (Kg)		
1~	3~		A	C	F	H	H1	H2	H3*	H4*	M	N	N1	S	W	B		DNA	DND
PT 120/ 075M	PT 120/ 075	0,75	53	213	327	232	108	124	211	210	39	120	160	9	93	76	G1 1/4"	G1"	10,5
PT 120/ 110M	PT 120/ 110	1,1	53	213	370	232	108	124	248	222	39	120	160	9	93	82	G1 1/4"	G1"	13,2
PT 120/ 150M	PT 120/ 150	1,5	53	235	383	252	120	132	260	234	39	140	180	9	96	90	G1 1/4"	G1"	16,0
PT 120/ 185M	PT 120/ 185	1,85	53	235	383	252	120	132	260	234	39	140	180	9	96	90	G1 1/4"	G1"	18,0
PT 200/ 075M	PT 200/ 075	0,75	54	213	328	232	108	124	211	210	39	120	160	9	93	76	G1 1/2"	G1"	10,5
PT 200/ 110M	PT 200/ 110	1,1	54	213	371	232	108	124	248	222	39	120	160	9	93	79	G1 1/2"	G1"	13,1
PT 200/ 150M	PT 200/ 150	1,5	54	213	371	232	108	124	248	222	39	120	160	9	93	79	G1 1/2"	G1"	15,4
PT 200/ 185M	PT 200/ 185	1,85	54	213	371	232	108	124	248	222	39	120	160	9	93	79	G1 1/2"	G1"	17,0
2PT 70/ 110M	2PT 70/ 110	1,1	91	235	421	257	120	137	260	224	39	140	180	9	94	90	G1 1/4"	G1"	15,8
2PT 70/ 150M	2PT 70/ 150	1,5	91	235	421	257	120	137	260	234	39	140	180	9	94	90	G1 1/4"	G1"	18,0
2PT 70/ 185M	2PT 70/ 185	1,85	91	235	421	257	120	137	260	234	39	140	180	9	94	90	G1 1/4"	G1"	20,0
2PT 120/ 185M	2PT 120/ 185	1,85	91	235	421	257	120	137	260	234	39	140	180	9	94	90	G1 1/4"	G1"	20,0
-	2PT 120/ 260	2,6	91	235	432	257	120	137	-	242	40	140	180	9	93	80	G1 1/4"	G1"	23,6
-	2PT 120/ 300	3,0	91	235	432	257	120	137	-	242	40	140	180	9	93	80	G1 1/4"	G1"	25,4